

UNIVERSAL TOWERS INSTALLATION INSTRUCTIONS



1.) Check the Instructions for your particular base to dig a proper size hole. Place each ten-foot tower section end to end in the correct order of assembly; start by putting the bottom section at which place the tower will stand. Make sure enough clearance exists so that the tower can later be walked up to its upright position without overhead interference.

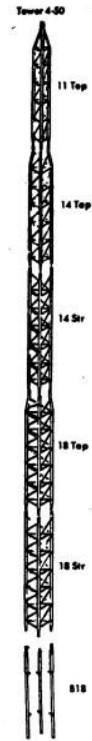
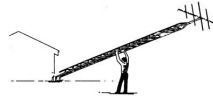
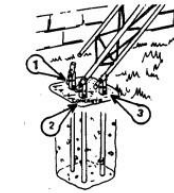
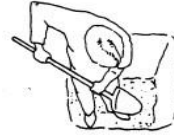
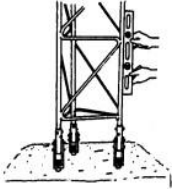
2.) Bolt the bottom 10 feet of the tower to the base and place it in the hole. Be sure tilt direction is common for all base legs and positioned properly as concrete is poured.

3.) Getting the bottom section plumb is very important. While concrete is setting up, the base can be leveled by using a carpenter's level on the upright of the section used to keep the base spread.

4.) Allow 3 to 4 days for concrete to set up.

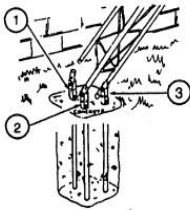
5.) Remove one bolt from each front leg and three bolts from the rear leg as shown. Tilt bottom 10 m. section to ground and connect remaining tower sections into the final assembly. Attach all wiring and fit the antenna to the tower.

6.) Walk up tower to its upright position, replacing bolts in the base to secure the tower.



WARRANTY: Universal Towers are warranted against defective material or workmanship and are subject to repair or to material replacement only if failure results from these factors within 1 year from purchase by user, this warranty does not extend to any of our products which have been subjected to misuse, neglect, accident, improper installation or application, nor shall it extend to units which have been repaired or substantially altered outside of our factory. This warranty is in lieu of all other warranties expressed or implied.

NOTE: LEGS SHOULD BE INSTALLED AS MARKED.

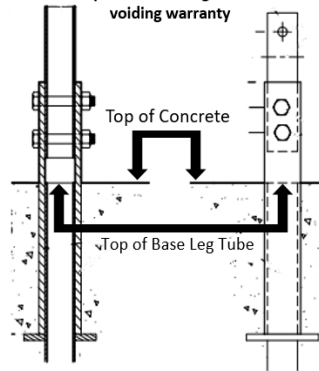


Base Model | Concrete Required | Hole Size

B-14	1/2 Cu. Yd.	28" x 28" x 4'
B-18	1-1/2 Cu. Yd.	3' x 3' x 4' deep
B-22	2 Cu. Yd.	4' x 4' x 4' deep
B-26	4 Cu. Yd.	4 1/2' x 4 1/2' x 5' deep
B-30	6 Cu. Yd.	5' x 5' x 6' deep

All bases should be bolted to the bottom tower section of your particular configuration. This will ensure correct equilateral spread of the base. While concrete is setting up, the base can be leveled by using a carpenter's level on the upright of the section used to keep the base spread. Concrete should be allowed set up for 3 or 4 days before erecting the remainder of the tower. **NOTE: All bases should be put in amount of concrete recommended.**

IMPORTANT: Concrete **MUST** be poured to the top of the base leg tube to avoid voiding warranty



Visit UniversalTowers.com For More Detailed Installation Drawings

CAUTION: DO NOT VOID YOUR WARRANTY Aluminum Tower section should NEVER be placed directly in concrete!! Corrosive effects of cement will DESTROY aluminum tower sections. Use only Universal Bases as shown. Tower sections also require drainage to minimize the possibility of freezing and splitting. Universal bases allow the tower to drain properly and alleviate the possibility of damage. Use of a Universal Tower without the proper base **VOIDS ALL WARRANTIES.**